

The skin ageing, the physiological one as well as the photo induced one, appears with loss of deep hydration, wrinkles, various kind of hyper pigmentations, alteration of amorphous components of derma.

This complex phenomenology is strictly dependent on the abnormal presence of free radicals, and will further on appear with a marked decrease of hyaluronic acid concentration, main factor of skin hydration and of noble proteins of connective tissue (collagen, elastin, fibronectin).



## New horizons

New orientations in rejuvenation determine the overtaking of protocols commonly used.

Most recent acquisitions induce to combined therapeutic approaches, able to gain manifold and differentiated aims, with specific actions of deep rehydration and revitalization of metabolic and vascular activities of dermo-epidermic structure.

The introduction of such orientations has brought to the structuring of an

Interactive Program of Bio Revitalization

of new generation, able to guarantee the gaining of results so far unnoticed.

# Biogenevity

The new generation Bio Revitalization.

## HYALIAPHASE

Injectable visco elastic solution of Hyaluronic Acid at a concentration of 20% and a molecular weight of 1.000.000.Dalton.

Lower concentrations would not guarantee a suitable water recall, lower molecular weights would have a low affinity for specific receptors (CD44) placed on fibroblasts.

## NUCLIAPHASE

Injectable visco elastic solution of Polynucleotides (PN), at the concentration of 7,5 mg/ml.

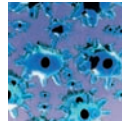
The macro molecules, at high molecular weight, are of natural origin and highly purified, so much as to have shown, with a prolonged clinical testing, total absence of local and /or systemic toxicity.

The particular formulations, the purity of raw material and the rigorous productive technique assure important revitalisations quality, starting specific and peculiar action mechanisms.



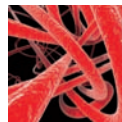
### Hydrate Action

Integration of decreasing hyaluronic acid with restoration of an adequate and physiologic level of fullness.



### Fibroblastic Stimulation

Increasing the number of Fibroblasts as well as the metabolic activity with re-integrate, in the derma, of the several fundamental autologous components (GAG, licoprotein, collagen, elastin, fibronectin, laminin, condronectin).



### Angiogenetic Action

Increase of local vasulation, with consequent acceleration of district oxygenation, thanks to the increasing, in the skin, of VEGF (Vascular Endothelial Growth Factor).



The combined use of HYALIAPHASE and NUCLIAPHASE upon scientifically programmed and tested protocols, guarantees the gaining of a marked grade of contrast at photo aging and, therefore, of a real and effective skin rejuvenation, thanks to the activation of specific functions.

- increase of endogenous hyaluronic acid with orientation, in the space, of a remarkable quantity of water molecules;
- intense scavenger action toward free radicals;
- hyper-stimulation of fibroblasts functionality;
- massive solicitation of capillary angiogenesis;
- protection toward damages caused by UV radiations.



# Biogenevity

## APPLICATION PROTOCOL.

### The treatment.

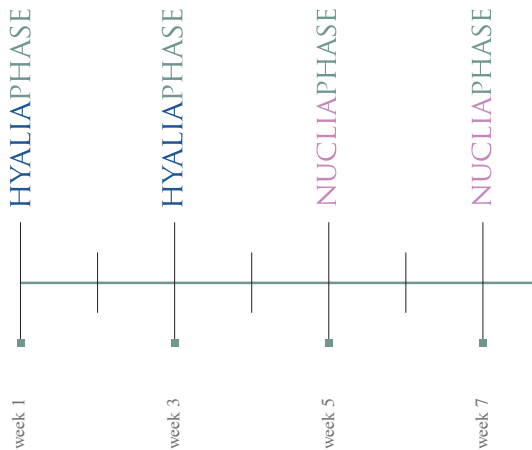
The program BIOGENEVITY, basing on a deepened scientific rationale, schedules the synergic employment, in subsequent phases, of the two products.

In a first phase it will be provided an actuation of an intense rehydration action:

two infiltrations of HYALIAPHASE, each infiltration spaced out by fifteen days (one every two weeks).

To obtain the adequate and optimal rehydration, there will be, on the fifth week,

the infiltration of NUCLIAPHASE, with the same cadence of the previous HYALIAPHASE: one every two weeks.



In case of particularly dehydrated skin, it can be performed as a SHOCK THERAPY: three HYALIAPHASE phials plus three of NUCLIAPHASE, with the usual break of fifteen days between infiltrations.

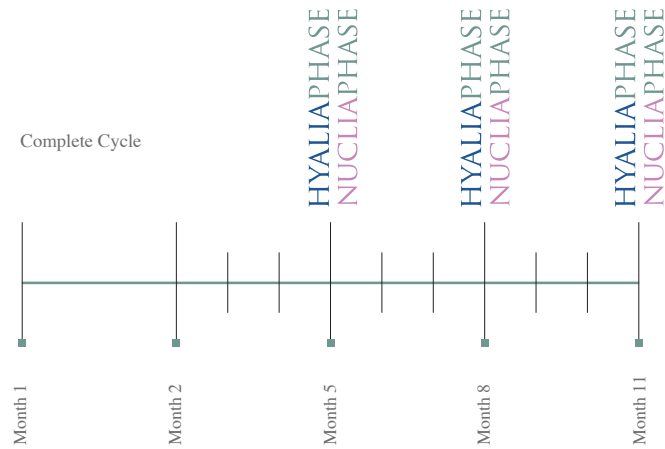


# Biogenevity

## APPLICATION PROTOCOL

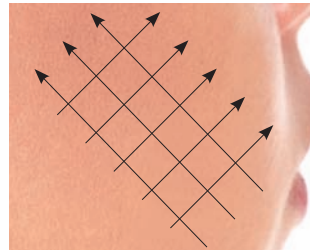
### The recalls

Once the complete Cycle scheduled by the Protocol is over,  
 for an optimal maintenance of the results it will be sufficient to make recalls every three months:  
 a first session with HYALIAPHASE and then, after fifteen days,  
 a second one with NUCLIAPHASE.

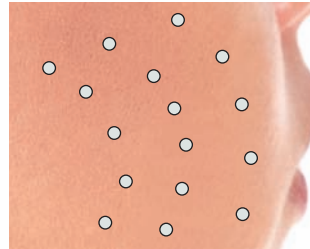




## Injective techniques



· LINEAR



· PICOTAGE



· NAPPAGE

## RECOMMENDATIONS

It is advisable not to perform the treatment, or the following recalls, if at least one week has not passed since the last consumption of anticoagulants and/or not steroid anti-inflammatories.

## PRECAUTIONS

It is advisable to operate in asepsis conditions, since any percutaneous treatment may involve infections risks.

## SIDE EFFECTS

Both products rarely show appearance of reactions linked to injective trauma: swellings, erythemas, bruises. Such eventual undesired phenomenon will settle, in any case, spontaneously within the following 24-48 hours.

## CONTRAINDICATIONS

Pregnant or breast-feeding women.

The performance of implants must be avoided in anatomical sites where infections or inflammatory processes are present (active acne, herpes, ...).

Reactions due to subjective hyper-sensitivity cannot be excluded.





Biogenevity

# Biogenevity

## The range

### HYALIAPHASE

### NUCLIAPHASE

Appearance	Transparent gel	Transparent gel
Volume per syringe	ml 1,3	ml 1,3
pH	7,3	7,3
Concentration	HA 20 mg/ml	PN 7,5 mg/ml
Molecular weight	HA 1.000.000 Da	PN 350.000 Da
Sterilization	Autoclave	Autoclave
Storage	Ambient t°	Ambient t°

# Biogenevity

